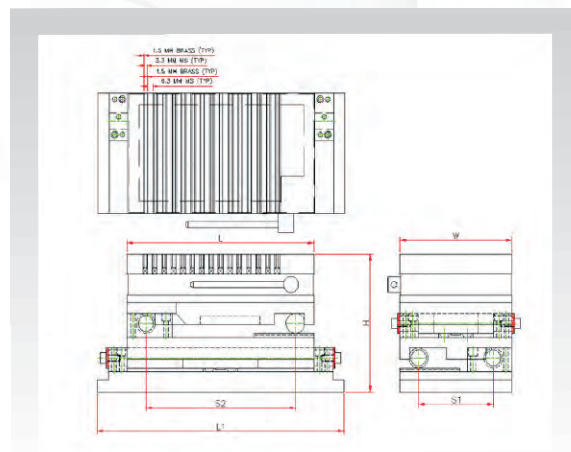
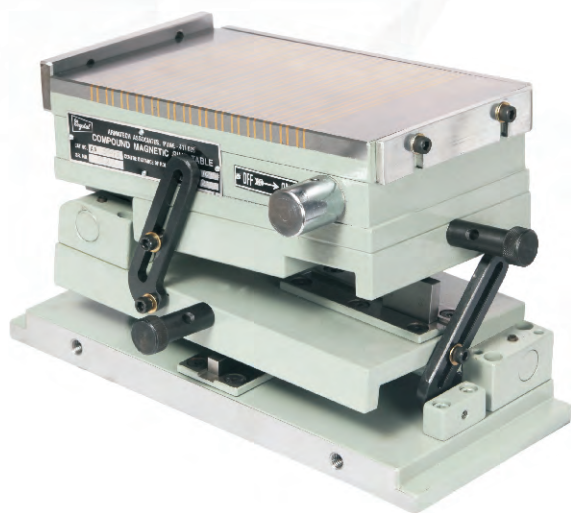


Compound Magnetic Sine Tables

Series AA-604



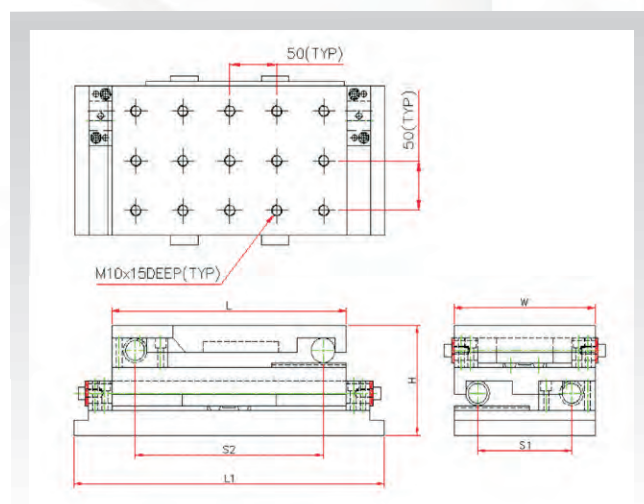
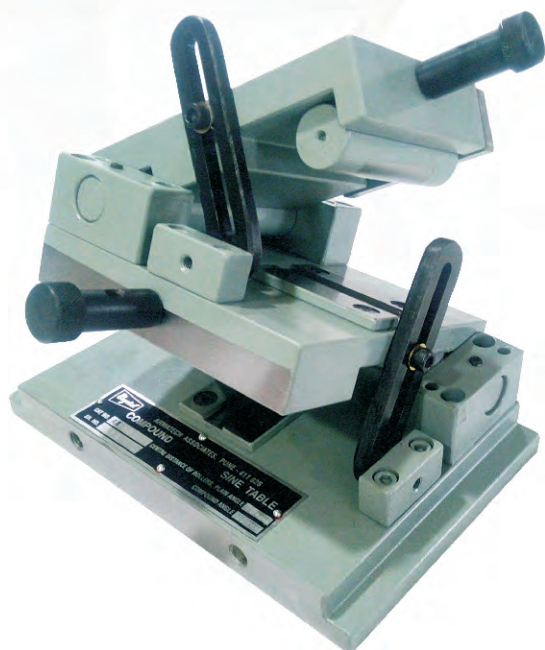
- Compound Magnetic Sine tables are ideal for precision grinding of multiple angles.
- They are made from high quality steel & base plate contains hardened bits.
- An angle can be set to within ± 5 seconds of a degree.
- Firm hinge clamps reduce possibility of distortions.
- Flatness 0.005mm per 100 mm. Center distance of the roller is within 0.005 mm.
- Fine pitch chuck of 9.9mm with laminated brass pole is provided for rigid clamping of small , medium & large components.
- Suitable for angle range from 0-45 degree.

Specifications:

Sr. No.	Cat. No.	Size in mm L X W X H	C. D. of Roller Plain Angle (S1)	C. D. Compound Angle (S2)	Bottom Plate Length (L1)
1	AA-6041	150 X 120 X 165	70	100	230
2	AA-6042	250 X 150 X 165	100	200	330
3	AA-6043	300 X 150 X 170	100	200	380
4	AA-6044	450 X 150 X 170	100	300	530
5	AA-6045	400 X 200 X 170	150	300	480

Compound Sine Tables (Non Magnetic)

Series AA-602



- Compound angle Sine tables are ideal for precision grinding of multiple angles..
- They are made from high quality steel & hardened and ground to 55 HRC \pm 2 HRC.
- An angle can be set to within \pm 5 seconds of a degree.
- Firm hinge clamps reduce possibility of distortions.
- Flatness 0.005mm per 100 mm. Center distance of the roller is within 0.005 mm.
- Tapped holes are provided on the top sides which facilitates clamping.
- Suitable for angle range from 0-45 degree

Specifications:

Sr. No.	Cat. No.	Size in mm L X W X H	C. D. of Roller angle (S1)	C. D. Compound angle (S2)	Bottom Plate Length (L1)
1	AA-6021	150 X 100 X 125	70	100	230
2	AA-6022	250 X 150 X 125	100	200	330
3	AA-6023	300 X 150 X 125	100	200	380
4	AA-6024	450 X 150 X 125	100	300	530

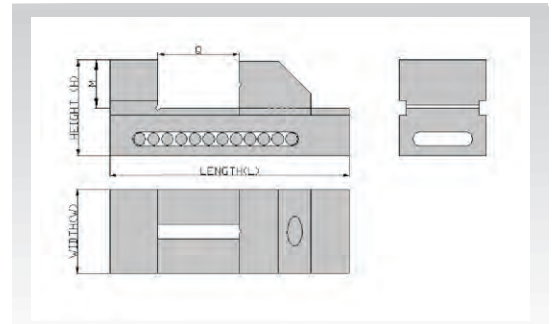
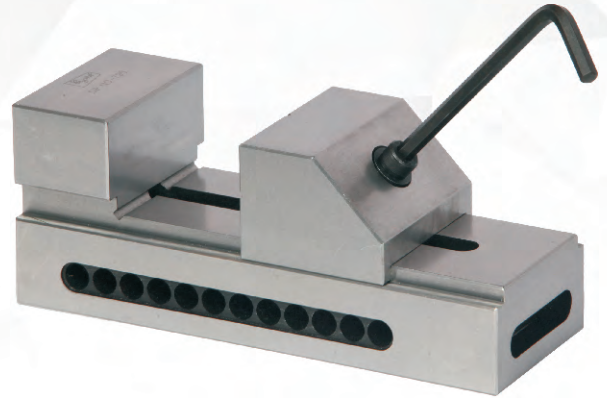
Hardened & Ground Precision Grinding Vice

Series AA-480

- Precision grinding vice is used for light machining, grinding & Inspection of precision components.
- All sides are grounded having accuracy for parallelism, flatness & squareness within ± 0.005 mm up till Cat No.AA-4803. For Cat No.AA-4804 the accuracy is ± 0.010 mm.
- Manufactured from high grade oil hardening steel, hardened & tempered to ensure stability & accuracy throughout the unit's working life.

Specifications:

Sr. No.	Cat. No.	Size in mm L X W X H	Jaw Opening (Q) in mm	Height of Jaw (M) in mm
1	AA-4801	150 x 48 x 60	0-75	30
2	AA-4802	180 x 63 x 70	0-90	35
3	AA-4803	200 x 73 x 80	0-100	40
4	AA-4804	235 x 96 x 96	0-125	48



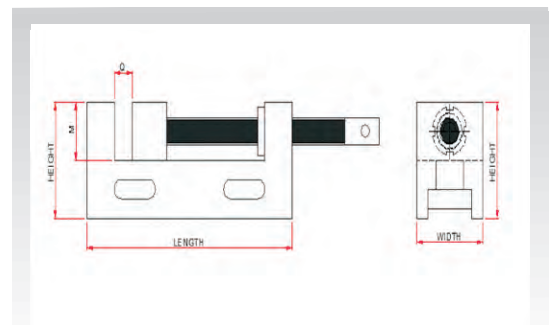
Hardened & Ground Precision Grinding Vice with Screw

Series AA-481

- All sides are grounded having accuracy for parallelism, flatness & squareness within ± 0.005 mm up till Cat No.AA-4813. For Cat No.AA-4814 the accuracy is ± 0.010 mm.
- Manufactured from high grade oil hardening steel, hardened & tempered to ensure stability & accuracy throughout the unit's working life.
- This vice is provided with a clamping screw having square thread & a gun metal bush.

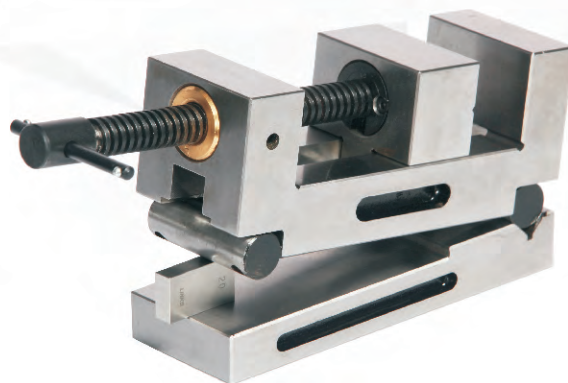
Specifications:

Sr. No.	Cat. No.	Size in mm L X W X H	Jaw Opening (Q) in mm	Height of Jaw (M) in mm
1	AA-4811	150 x 48 x 60	0-75	30
2	AA-4812	180 x 63 x 70	0-90	40
3	AA-4813	200 x 73 x 80	0-100	45
4	AA-4814	235 x 96 x 96	0-125	56



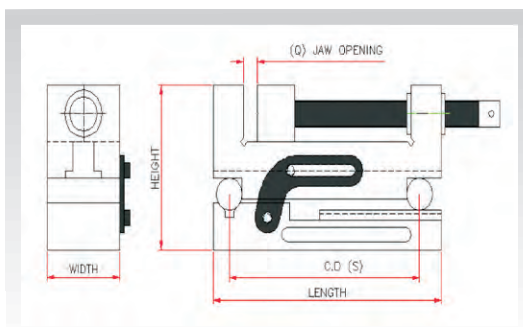
Precision Grinding Sine Vice with Screw Series AA-613

- Precision grinding vice is used for precision degree grinding & inspection of angles.
- Accuracy for squareness, flatness, & parallelism is within ± 0.005 mm up till Cat No.AA-6133 . For Cat No.AA-6134 the accuracy is ± 0.010 mm.
- Angular accuracy within ± 5 seconds.
- Center distance between rollers is within ± 0.005 mm.
- This vice is provided with a clamping screw having square thread & a gun metal bush.



Specifications:

Sr. No.	Cat. No.	Size in mm L X W X H	Opening 'Q' in mm	C.D. 'S' in mm Centre Dist.
1	AA-6131	150 x 48 x 88	0-75	125
2	AA-6132	180 x 63 x 98	0-90	150
3	AA-6133	200 x 73 x 108	0-100	175
4	AA-6134	235 x 96 x 130	0-125	200

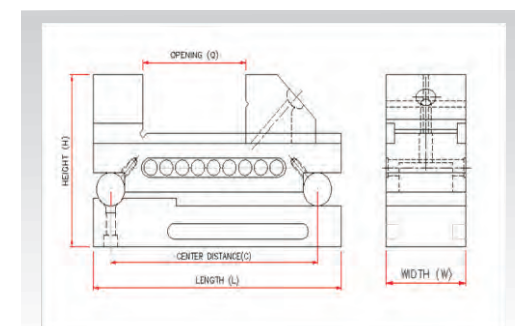
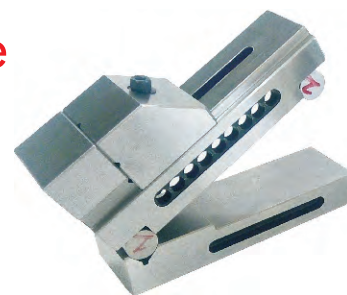


Precision Grinding Sine Vice Angular Type Series AA-614

- Precision grinding vice is used for precision degree grinding & inspection of angles.
- Accuracy for squareness, flatness, & parallelism is within ± 0.005 mm up till Cat No.AA-6143 . For Cat No.AA-6144 the accuracy is ± 0.010 mm.

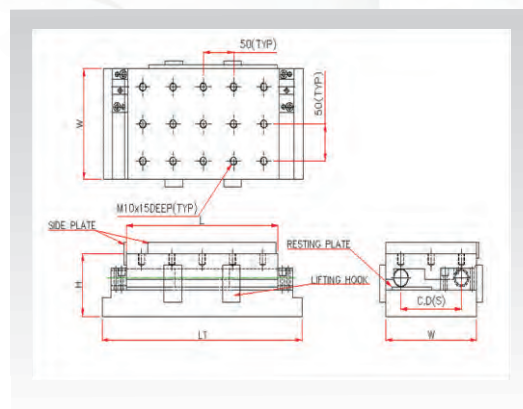
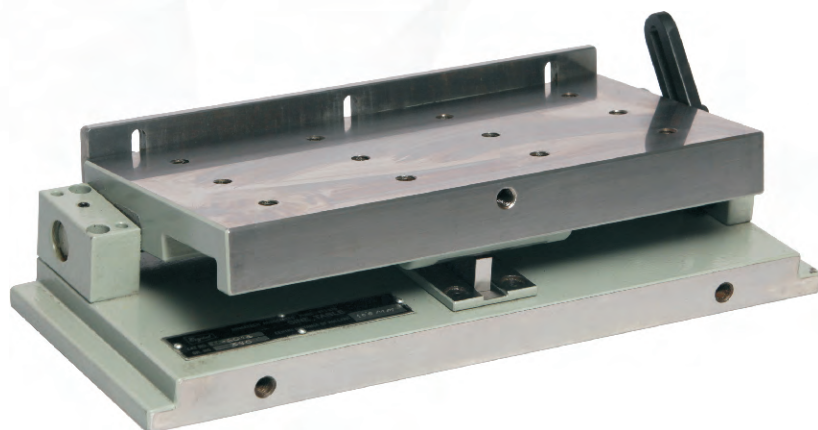
Specifications:

Sr. No.	Cat. No.	Size in mm L X W X H	Opening 'Q' in mm	C.D. 'S' in mm Centre Dist.
1	AA-6141	150 x 48 x 88	0-75	125
2	AA-6142	180 x 63 x 98	0-90	150
3	AA-6143	200 x 73 x 108	0-100	175
4	AA-6144	235 x 96 x 130	0-125	200



Sine Tables (Non Magnetic)

Series AA-601



- Sine tables are ideal for precision angle grinding & inspections.
- They are made from high quality steel & hardened and ground to 55 HRC \pm 2 HRC.
- An angle can be set to within \pm 5 seconds of a degree.
- Firm hinge clamps reduce possibility of distortions.
- Flatness 0.005mm per 100 mm. Center distance of the roller is within 0.005 mm.
- Tapped holes are provided on the top sides which facilitates clamping.
- Suitable for angle range from 0-45 degree.

Specifications:

Sr. No.	Cat. No.	Size in mm L X W X H	C. D. of Roller (S) mm	Bottom Plate Length (L1)
1	AA-6011	150 X 120 X 85	70	230
2	AA-6012	250 X 150 X 85	100	330
3	AA-6013	300 X 150 X 85	100	380
4	AA-6014	450 X 150 X 85	100	530