

Demagnetizers

Series AA-251

- Plate type Demagnetizer are used remove surface residual magnetism for material HSS, nickel chrome, spring steel , die steel.
- These demagnetizers produce an alternating magnetic field on the surface by use of an AC power source through which work pieces are passed to remove the magnetism remaining on their surface.
- Demagnetizers are supplied with ON/OFF switch & foot switch for safety.
- S.S top cover is provided scratch free demagnetization.



Specifications:

Sr. No.	Cat. No.	Size in mm L X W X H
1	AA-2511	150 x 100 (6" x 4")
2	AA-2512	150 x 150 (6" x 6")
3	AA-2513	150 x 225 (6" x 9")

Sr. No.	Cat. No.	Size in mm L X W X H
4	AA-2514	150 x 300 (6" x 12")
5	AA-2515	350 x 350 (14" x 14")

Coil Type Demagnetizers

Series AA-252

- Coil type Demagnetizers are used to remove surface residual magnetism of cylindrical components such as hobs, gears.
- Fiber body allows scratch free demagnetization.



Specifications:

Sr. No.	Cat. No.	Size in mm
1	AA-2521	Ø 100 Bore
2	AA-2522	Ø 150 Bore

Sr. No.	Cat. No.	Size in mm
3	AA-2523	Ø 200 Bore
4	AA-2524	Ø 300 Bore

We also manufacture continuous power application demagnetizer as per customer required.

Parallel Blocks

Series AA-120

- Made from special quality steel.
- Hardened & Ground to 55 HRC \pm 2 HRC.
- Ground and finished on four sides.
- Precisely ground in matched pairs.
- Thickness, Width and length are nominal and within \pm 0.1mm up to 200mm Length \pm 0.2mm up to 450mm Length.
- Accuracy for Parallelism & Squareness is \pm 0.005 mm up to 200mm Length and \pm 0.010mm up to 450mm Length.
- All the four sides are chamfered.



Specifications:

Sr. No.	Cat. No.	Size in mm L X W X H
1	AA-1201	100 X 10 X 5
2	AA-1202	100 X 12 X 5
3	AA-1203	100 X 15 X 5
4	AA-1204	100 X 20 X 5
5	AA-1205	150 X 10 X 6
6	AA-1206	150 X 12 X 6
7	AA-1207	150 X 15 X 6
8	AA-1208	150 X 20 X 6
9	AA-1209	150 X 10 X 10
10	AA-1210	150 X 12 X 10
11	AA-1211	150 X 15 X 10
12	AA-1212	150 X 20 X 10
13	AA-1213	150 X 15 X 15
14	AA-1214	150 X 20 X 15
15	AA-1215	150 X 25 X 15
16	AA-1216	150 X 30 X 15
17	AA-1217	200 X 20 X 15

Sr. No.	Cat. No.	Size in mm L X W X H
18	AA-1218	200 X 25 X 15
19	AA-1219	200 X 30 X 20
20	AA-1220	200 X 40 X 20
21	AA-1221	200 X 20 X 25
22	AA-1222	200 X 30 X 25
23	AA-1223	200 X 40 X 25
24	AA-1224	200 X 50 X 25
25	AA-1225	250 X 15 X 20
26	AA-1226	250 X 20 X 20
27	AA-1227	250 X 25 X 20
28	AA-1228	250 X 30 X 20
29	AA-1229	250 X 40 X 25
30	AA-1230	250 X 50 X 25
31	AA-1231	250 X 50 X 30
32	AA-1232	250 X 60 X 30
33	AA-1233	300 X 25 X 25
34	AA-1234	300 X 30 X 25

Sr. No.	Cat. No.	Size in mm L X W X H
35	AA-1235	300 X 40 X 25
36	AA-1236	300 X 50 X 25
37	AA-1237	300 X 40 X 35
38	AA-1238	300 X 50 X 35
39	AA-1239	300 X 60 X 35
40	AA-1240	300 X 70 X 35
41	AA-1241	300 X 30 X 40
42	AA-1242	350 X 40 X 40
43	AA-1243	350 X 50 X 40
44	AA-1244	350 X 70 X 40
45	AA-1245	400 X 50 X 50
46	AA-1246	400 X 60 X 50
47	AA-1247	400 X 75 X 50
48	AA-1248	400 X 100 X 50
49	AA-1249	450 X 50 X 50
50	AA-1250	450 X 60 X 50
51	AA-1251	450 X 75 X 50
52	AA-1252	450 X 100 X 50

Support Screw Jacks

Series AA-144



- Safe and reliable adjustable height supports for work pieces.
- Designed for use with different style of pads.
- Numerous applications to support work pieces of regular as well as irregular shapes and height levels in layout , machining and inspection.
- Made from EN series steel.
- Lock nut gives permanent positioning & safe clamping.

Specifications:

A] Jack

Sr. No.	Cat. No.	Jack Dia in mm	Height Range in mm
1	AA-1441	Ø 40	50 - 70
2	AA-1442	Ø 50	100 - 150
3	AA-1443	Ø 60	150 - 250

B] Pads

Sr. No.	Cat. No.	Pad Dia in mm	Style
1	AA-1444	Ø 25	A/B/C/D/E/F
2	AA-1444G	Ø 60	G

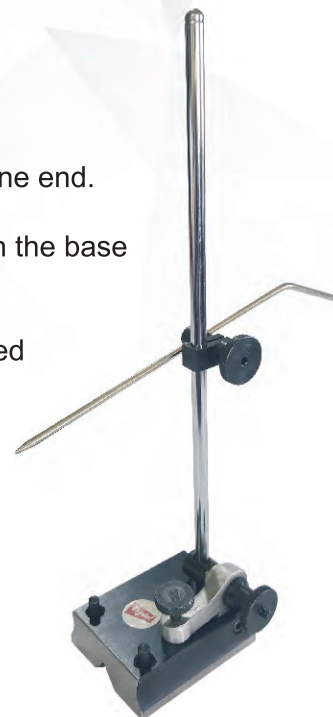
C] Set

Sr. No.	Cat. No.	Style
1	AA-1445	4 Jacks – two each Serial No.1 & 2 6 Pads – one each style A to F
1	AA-1446	4 Jacks – two each Serial No.2 & 3 6 Pads – one each style A to F

Universal Surface Gauges

Series AA-141

- The base is made from case – hardened steel, ground on the bottom and at one end.
- There is a depression in each side for the thumb and fingers and the groove in the base adapts it for use on cylindrical as well as flat surfaces.
- There are two gauge pins frictionally held, which can be pushed down and used against the end of a surface plate on a T- slot for linear work.
- The fine adjustment feature makes it possible to obtain quick and accurate settings.
- The spindle which passes through rotating head or lower sleeve can be set above or below the base. The hardened and ground scriber can be set at any position on the spindle which in turn can be set at any angle.



Specifications:

Sr. No	Cat. No.	Size in mm L X W X H
1	AA-1411	80 X 65 X 300 [12"]
2	AA-1412	100 X 85 X 450 [18"]
3	AA-1413	110 X 90 X 600 [24"]

Heavy Duty Surface Gauge

Series AA-141

- These are very heavy and robust stands. They are used wherever optimum rigidity is demanded.
- The extremely sturdy columns guarantee high-test rigidity. These stands have a novel clamping device for the projection of scribe.
- Heavy duty surface Gauge has simple and rapid setting of the stand and clamps and scribe in any position even at moderate tightening.

Specifications:

Sr. No	Cat. No.	Size in mm (Base) L X W X H	Height of Column
1	AA-1415	130 X 105 X 35	600
2	AA-1416	160 X 130 X 40	1000



Hardened & Ground Tri-square Flat Edge without Stock

Accuracy as per IS-2103-1980
Series AA-410

- Single piece design made from imported OHNS.
- Squares having accurate right angles both inside & outside.
- Beams & Blades are accurately lapped for straightness & parallelism.
- All squares are fully hardened to 55 HRC \pm 2 HRC.
- Beam is grooved at inner corner for clearance of burns & dirt.
- Packed in individual wooden Box.

Specifications:

Sr. No	Cat. No.	Size in mm L X W X T
1	AA-4101	50 X 30 X 4
2	AA-4102	75 X 50 X 4.5
3	AA-4103	100 X 70 X 5
4	AA-4104	150 X 100 X 6

Sr. No	Cat. No.	Size in mm L X W X T
5	AA-4105	200 X 140 X 7
6	AA-4106	250 X 165 X 8
7	AA-4107	300 X 200 X 8
8	AA-4108	400 X 250 X 10



Hardened & ground knife edge (Bevelled Edge) Tri-squares

Accuracy as per IS-2103-1980
Series AA-420

- Single piece design made from imported OHNS.
- Squares having accurate right angles both inside & outside.
- Beams & Blades are accurately lapped for straightness & parallelism.
- All squares are fully hardened to 55 HRC \pm 2 HRC.
- Beam is grooved at inner corner for clearance of burns & dirt.
- Blades are beveled on the each side which provide an excellent visual line contact with the work piece.
- Packed in individual wooden Box.

Specifications:

Sr. No	Cat. No.	Size in mm L X W X T
1	AA-4201	50 X 35 X 4
2	AA-4202	75 X 50 X 4.5
3	AA-4203	100 X 70 X 5
4	AA-4204	150 X 100 X 6

Sr. No	Cat. No.	Size in mm L X W X T
5	AA-4205	200 X 140 X 7
6	AA-4206	250 X 165 X 8
7	AA-4207	300 X 200 X 8
8	AA-4208	400 X 250 X 10



Hardened & Ground Tri-square with Stock

Accuracy as per IS-2103-1980
Series AA-270

- Single piece design up till 300mm & after that in two pieces are made from imported OHNS.
- Squares having accurate right angles both inside & outside.
- Beams & Blades are accurately lapped for straightness & parallelism.
- Beam is grooved at inner corner for clearance of burns & dirt.
- All squares are fully hardened to 55 HRC \pm 2 HRC.
- Packed in individual wooden Box.



Specifications:

Sr. No	Cat. No.	Size mm L X W X T
1	AA-2701	100 X 70 X 10
2	AA-2702	150 X 100 X 12
3	AA-2703	200 X 140 X 15
4	AA-2704	250 X 165 X 20
5	AA-2705	300 X 200 X 20

Sr. No	Cat. No.	Size mm L X W X T
6	AA-2706	400 X 250 X 25
7	AA-2707	500 X 300 X 25
8	AA-2708	700 X 450 X 30
9	AA-2709	1000 X 750 X 40

Hardened & Ground Flanged Beam Tri-square

Accuracy as per IS-2103-1980
Series AA-440

- Single piece design up till 300mm & after that in two pieces are made from imported OHNS.
- Squares having accurate right angles both inside & outside.
- Beams & Blades are accurately lapped for straightness & parallelism.
- Beam is grooved at inner corner for clearance of burns & dirt.
- All squares are fully hardened to 55 HRC \pm 2 HRC.
- Packed in individual wooden Box.
- Base has extra wide flange for support.



Specifications:

Sr. No	Cat. No.	Length of the beam in mm	Cross Section in mm
1	AA-4401	100 X 70	18 X 5
2	AA-4402	150 X 100	25 X 6

Sr. No	Cat. No.	Length of the beam in mm	Cross Section in mm
3	AA-4403	200 X 140	30 X 7
4	AA-4404	300 X 200	40 X 8

Universal 'V' Blocks

As Per I.S.4960-1968
Series AA-178

- A precision universal 'V' non magnetic block for the most accurate Tool Room & Quality Control Work.
- All the four Vees are parallel and their squareness to the end faces and height variations in the 'V' blocks are controlled in a matched pair.
- Grade -A-Hardened & Ground made from alloy steel Hardness 55 HRC \pm 2 HRC.
- Grade-B-Made from extra dense and hard cast iron.
- Universal type 'V' Blocks have four 90° 'V' & are supplied without clamps.



Specifications:

Sr. No	Cat. No.	Size in mm L X W X H
1	AA-1781	63 X 100 X 100
2	AA-1782	80 X 160 X 160
3	AA-1783	100 X 200 X 200
4	AA-1784	125 X 300 X 300

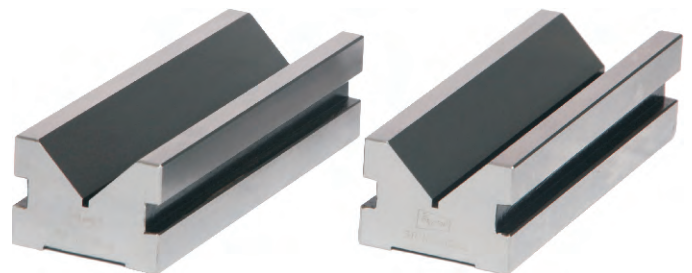
✓ Grade B

Sr. No	Cat. No.	Size in mm L X W X H
5	AA-1785	60 X 120 X 120
6	AA-1786	75 X 150 X 150
7	AA-1787	90 X 190 X 190

Elongated 'V' Blocks

As per I.S.4960-1968
Series AA-179

- A precision 'V' for the most accurate Tool Room, Quality Control, Work Shop .
- 'V' groves & all sides are ground central , parallel & square.
- Perfect alignment in matched pairs having hardness 55 HRC \pm 2 HRC.
Elongated 'V' Blocks do not come with clamps.



Specifications:

Sr. No.	Cat. No.	Size in mm L X W X H
1	AA-1791	50 X 160 X 35
2	AA-1792	200 X 63 X 50
3	AA-1793	300 X 100 X 63

Sr. No.	Cat. No.	Size mm L X W X H
4	AA-1794	100 X 40 X 32
5	AA-1795	200 X 70 X 50
6	AA-1796	300 X 100 X 65