

# SRX00 Series

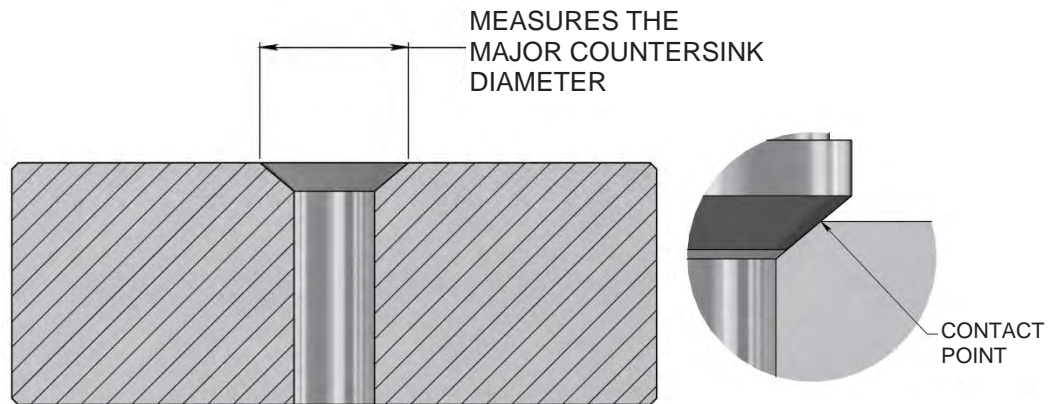
Countersink Diameter Gage

**TRULOK**  
PRECISION MEASURING INSTRUMENTS



## CONICAL PROBE

A high precision digital gage for quick and accurate measurement of the major countersink diameter. The SRX00 gages have a conical probe that contacts the major countersink diameter (see detail). This gage has the capability to cover a large range of countersink diameters.



## FEATURES

- Measuring accuracy .00025 inch (.006mm)
- Direct contact on the major countersink diameter
- Direct reading, no calculations or charts necessary
- Large base configurations available for curved surfaces
- Accurate, repeatable, and reproducible
- SPC ready via data port cable
- Ease of use with minimal training
- Eliminate costly rework
- Gage and set block calibrated to NIST traceable standards
- Unique serial numbers on gages, set blocks, and indicators
- Components made of heat treated, wear-resistant tool steels and microfinished to ensure accurate and trouble-free operation



#### DIGITAL INDICATOR'S FEATURES

- LCD display with rotating bezel
- Inch/mm mode toggle capable
- SPC data output ready via data port
- Upper and lower tolerance capable
- Wireless transmission & Bluetooth compatible

#### ORDERING INFORMATION:

**SRX00 - XXX - XX**

#### BODY STYLE:

- 7 = KNURLED, SLIM
- 8 = KNURLED TYPE
- 9 = FLANGE STYLE

#### COUNTERSINK "A" INCLUDED ANGLE:

- 60°, 82°, 90°, 100°, 120°, 130°, 135°, 140°, 150°

#### DIAMETER "C" RANGE:

- 0 = .020" - .170" / 0,51mm - 4,32mm
- 1 = .160" - .360" / 4,06mm - 9,15mm
- 2 = .360" - .560" / 9,15mm - 14,22mm
- 3 = .560" - .780" / 14,22mm - 19,81mm
- 4 = .780" - 1.00" / 19,81mm - 25,40mm
- 5 = 1.00" - 1.25" / 25,40mm - 31,75mm
- 6 = 1.25" - 1.56" / 31,75mm - 39,63mm

#### BASE STYLE:

- T = TRIPOD
- B = BIPOD
- Q = QUADPOD

#### BODIES:



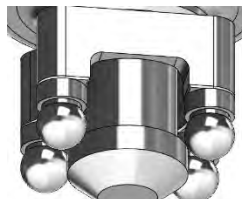
#### BASES:



TRIPOD



BIPOD



QUADPOD

TRULOK® gages are built to your exact specifications and parameters. Please supply us with the following data:

Countersink angle "A"	Countersink Ø "C"	Standard countersink? [YES   NO]	Counterbore countersink? [YES   NO]

- Fastener part number | specification: \_\_\_\_\_
- Surface curvature: \_\_\_\_\_
- Size, thickness & position of any Drilling jig or fixture to measure through: \_\_\_\_\_

# SRX00 Series

Countersink Diameter Gage  
Annex

**TRULOK**  
PRECISION MEASURING INSTRUMENTS



Body style: 9

Range	C'sink Angle	Body style: 9 Base style: T	Body style: 9 Base style: B	Body style: 9 Base style: Q
		Part Number	Part Number	Part Number
.020-.170"	82°	SR900-82-0T	SR900-82-0B	SR900-82-0Q
	90°	SR900-90-0T	SR900-90-0B	SR900-90-0Q
	100°	SR900-100-0T	SR900-100-0B	SR900-100-0Q
	120°	SR900-120-0T	SR900-120-0B	SR900-120-0Q
	130°	SR900-130-0T	SR900-130-0B	SR900-130-0Q
.160-.360"	82°	SR900-82-1T	SR900-82-1B	SR900-82-1Q
	90°	SR900-90-1T	SR900-90-1B	SR900-90-1Q
	100°	SR900-100-1T	SR900-100-1B	SR900-100-1Q
	120°	SR900-120-1T	SR900-120-1B	SR900-120-1Q
	130°	SR900-130-1T	SR900-130-1B	SR900-130-1Q
.360-.560"	82°	SR900-82-2T	SR900-82-2B	SR900-82-2Q
	90°	SR900-90-2T	SR900-90-2B	SR900-90-2Q
	100°	SR900-100-2T	SR900-100-2B	SR900-100-2Q
	120°	SR900-120-2T	SR900-120-2B	SR900-120-2Q
	130°	SR900-130-2T	SR900-130-2B	SR900-130-2Q
.560-.780"	82°	SR900-82-3T	SR900-82-3B	SR900-82-3Q
	90°	SR900-90-3T	SR900-90-3B	SR900-90-3Q
	100°	SR900-100-3T	SR900-100-3B	SR900-100-3Q
	120°	SR900-120-3T	SR900-120-3B	SR900-120-3Q
	130°	SR900-130-3T	SR900-130-3B	SR900-130-3Q
.780-1.00"	82°	SR900-82-4T	SR900-82-4B	SR900-82-4Q
	90°	SR900-90-4T	SR900-90-4B	SR900-90-4Q
	100°	SR900-100-4T	SR900-100-4B	SR900-100-4Q
	120°	SR900-120-4T	SR900-120-4B	SR900-120-4Q
	130°	SR900-130-4T	SR900-130-4B	SR900-130-4Q
1.00-1.25"	82°	SR900-82-5T	SR900-82-5B	SR900-82-5Q
	90°	SR900-90-5T	SR900-90-5B	SR900-90-5Q
	100°	SR900-100-5T	SR900-100-5B	SR900-100-5Q
	120°	SR900-120-5T	SR900-120-5B	SR900-120-5Q
	130°	SR900-130-5T	SR900-130-5B	SR900-130-5Q



Body style: 8

Range	C'sink Angle	Body style: 8 Base style: T	Body style: 8 Base style: B	Body style: 8 Base style: Q
		Part Number	Part Number	Part Number
.020-.170"	82°	SR800-82-0T	SR800-82-0B	SR800-82-0Q
	90°	SR800-90-0T	SR800-90-0B	SR800-90-0Q
	100°	SR800-100-0T	SR800-100-0B	SR800-100-0Q
	120°	SR800-120-0T	SR800-120-0B	SR800-120-0Q
	130°	SR800-130-0T	SR800-130-0B	SR800-130-0Q
.160-.360"	82°	SR800-82-1T	SR800-82-1B	SR800-82-1Q
	90°	SR800-90-1T	SR800-90-1B	SR800-90-1Q
	100°	SR800-100-1T	SR800-100-1B	SR800-100-1Q
	120°	SR800-120-1T	SR800-120-1B	SR800-120-1Q
	130°	SR800-130-1T	SR800-130-1B	SR800-130-1Q
.360-.560"	82°	SR800-82-2T	SR800-82-2B	SR800-82-2Q
	90°	SR800-90-2T	SR800-90-2B	SR800-90-2Q
	100°	SR800-100-2T	SR800-100-2B	SR800-100-Q
	120°	SR800-120-2T	SR800-120-2B	SR800-120-2Q
	130°	SR800-130-2T	SR800-130-2B	SR800-130-2Q
.560-.780"	82°	SR800-82-3T	SR800-82-3B	SR800-82-3Q
	90°	SR800-90-3T	SR800-90-3B	SR800-90-3Q
	100°	SR800-100-3T	SR800-100-3B	SR800-100-3Q
	120°	SR800-120-3T	SR800-120-3B	SR800-120-3Q
	130°	SR800-130-3T	SR800-130-3B	SR800-130-3Q
.780-1.00"	82°	SR800-82-4T	SR800-82-4B	SR800-82-4Q
	90°	SR800-90-4T	SR800-90-4B	SR800-90-4Q
	100°	SR800-100-4T	SR800-100-4B	SR800-100-4Q
	120°	SR800-120-4T	SR800-120-4B	SR800-120-4Q
	130°	SR800-130-4T	SR800-130-4B	SR800-130-4Q
1.00-1.25"	82°	SR800-82-5T	SR800-82-5B	SR800-82-5Q
	90°	SR800-90-5T	SR800-90-5B	SR800-90-5Q
	100°	SR800-100-5T	SR800-100-5B	SR800-100-5Q
	120°	SR800-120-5T	SR800-120-5B	SR800-120-5Q
	130°	SR800-130-5T	SR800-130-5B	SR800-130-5Q

# SRX00 Series

Countersink Diameter Gage  
Annex

**TRULOK**  
PRECISION MEASURING INSTRUMENTS



Body Style: 7

Range	C'sink Angle	Body style: 7 Base style: T	Body style: 7 Base style: B	Body style: 7 Base style: Q
		Part Number	Part Number	Part Number
.020-.170"	82°	SR700-82-0T	SR700-82-0B	SR700-82-0Q
	90°	SR700-90-0T	SR700-90-0B	SR700-90-0Q
	100°	SR700-100-0T	SR700-100-0B	SR700-100-0Q
	120°	SR700-120-0T	SR700-120-0B	SR700-120-0Q
	130°	SR700-130-0T	SR700-130-0B	SR700-130-0Q
.160-.360"	82°	SR700-82-1T	SR700-82-1B	SR700-82-1Q
	90°	SR700-90-1T	SR700-90-1B	SR700-90-1Q
	100°	SR700-100-1T	SR700-100-1B	SR700-100-1Q
	120°	SR700-120-1T	SR700-120-1B	SR700-120-1Q
	130°	SR700-130-1T	SR700-130-1B	SR700-130-1Q
.360-.560"	82°	SR700-82-2T	SR700-82-2B	SR700-82-2Q
	90°	SR700-90-2T	SR700-90-2B	SR700-90-2Q
	100°	SR700-100-2T	SR700-100-2B	SR700-100-2Q
	120°	SR700-120-2T	SR700-120-2B	SR700-120-2Q
	130°	SR700-130-2T	SR700-130-2B	SR700-130-2Q
.560-.780"	82°	SR700-82-3T	SR700-82-3B	SR700-82-3Q
	90°	SR700-90-3T	SR700-90-3B	SR700-90-3Q
	100°	SR700-100-3T	SR700-100-3B	SR700-100-3Q
	120°	SR700-120-3T	SR700-120-3B	SR700-120-3Q
	130°	SR700-130-3T	SR700-130-3B	SR700-130-3Q