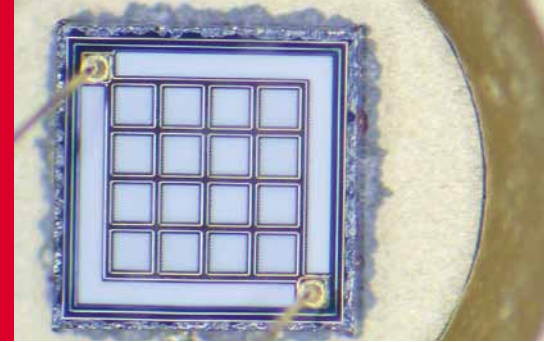


Stereo Microscope



K-Series



K-400L



K-500L



K-700P

Infinity optics, versatile, common main objective [CMO], this series is ideal for most inspection applications.

| | | K400L | K500L | K700P |
|-------|------------------------------------|---|---|--|
| Body | Optical System | Infinity, common main objective [CMO] | | |
| | Convergent Angle | 14° | | |
| | Magnification | 4 Step Changer [6,12,25,50 ratio] | [6.4, 10, 16, 25, 40 ratio] 5 Step Changer | Zoom range: 5.2:1 |
| | Working Distance | 89mm | | |
| | Observation tube inclination | 45° | | |
| | Interpupillary distance adjustment | 54mm - 76mm | | |
| | Diopter adjustment | ±5 diopter | | |
| | Auxiliary objectives | 0.3X, 0.5X, 0.625X, 1.5X, 2X | | |
| | Eyepiece | Super Widefield 10X/ 23 | | |
| Stand | | Illumination stand | | Plain stand |
| | Focusing adjustment | 50mm | | |
| | Stage Plate | Black & white plate, Frosted glass plate | | Black & white plate |
| | Light Source | Incident light: 12V/10W Halogen Transmitted light: 12V/10W Halogen | | Cold light illumination (optional) Fluorescent ring Illuminator(optional) LED ring Illuminator(optional) |

Stereo Microscope

SMZ-171



SMZ-171BLED
(Pole Type)



SMZ-171TLED
(Fixed Arm)



SMZ-171TP
(Fixed Arm)

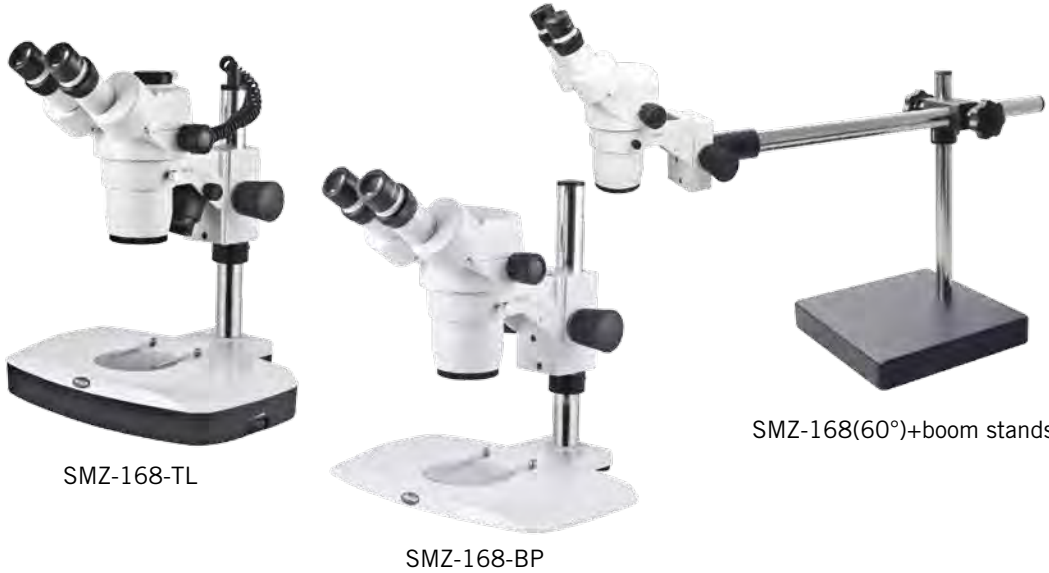
Greenough stereoscopic optical system and multi-coated lens with relax view observation. Optional ESD feature for head and stand is available. Designed for a wide range of biological and material science applications, especially for industrial quality control.

| | SMZ-171BL | SMZ-171TL |
|--------------------------------|---|--|
| Optical system | Greenough | |
| Observation angle | 45°/ 60° | 45° |
| Magnification range (standard) | 0.75X--5X | |
| Zoom ratio | 1:6.7 | |
| Eyepiece | N-WF, high eye-point 10X (Ø23), Diopter adjustable | |
| | N-WF 12.5X (Ø18), 15X (Ø16), 20X (Ø13) optional | |
| Interpupillary adjustment | 48mm-75mm | |
| Height of eye point | 405mm | |
| Working distance (standard) | 110mm | |
| Weight | 6.2 kg (head 1.4kg) | |
| C-Mount adapter | / | Trinocular head only |
| | / | 0.5X, 0.65X, 1X adapters available |
| Photo adapter | / | Photo adapter, 2.5X, 4X photo eyepiece available |
| Auxiliary ESD objectives | 0.3X [WD = 301mm], 0.5X [WD = 191.8mm], 0.63X [WD = 142.7mm], 0.75X [WD = 128.6mm], 1.5X [WD = 56.3mm], 2.0X [WD = 38.6mm] | |
| Max. working distance | 301mm | |
| Stand option | Stable pole stand and arm base stand available 3W LED incident and transmitted light with reflector design Improved design for various boom stands for industrial use ESD stand optional | |

Stereo Microscope



SMZ-168



SMZ-168-TL

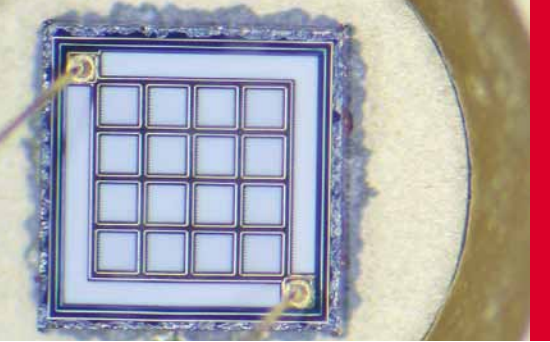
SMZ-168-BP

SMZ-168(60°)+boom stands

Zoom ratio of 6.7:1 and excellent optical performance combined with outstanding price-performance ratio. Designed to satisfy the most demanding user applications.

| | SMZ-168 B | SMZ-168 (60°) + boom stands | SMZ-168 T | |
|----------------------|--|--|--|---|
| Body | Optical system | Greenough | | |
| | Tube inclination angle | 35° | 60° | 35° |
| | Magnification range | 0.75X – 5X | | |
| | Zoom ratio | 1:6.7 | | |
| | Eyepiece | High eyepoint, widefield WF10X/23 Widefield WF5X/23, WF6.25X/23, WF15X/17, WF20X/13, WF30X/8, WF32X/8 optional | | |
| | Interpupillary distance adjustment | ±5 diopter, 52mm - 75mm | | |
| | Working distance | 113mm | | |
| | C-mount adapter | / | / | 0.3X, 0.65X available |
| | Photo adapter | / | / | Photo adapter, 2X photo eyepiece available |
| Auxiliary objectives | 0.3X [WD =324mm], 0.5X [WD =192mm], 0.63X [WD =156mm] 0.75X [WD =127mm], 1.5X [WD =50mm], 2X [WD = 34.5mm] | | | |
| Stand | | Plain stand – 168P | Illumination stand – 168L | |
| | Focusing adjustment | 50mm | | |
| | Stage Plate | Black & white plate | Black & white plate, Frosted glass plate | |
| | Light Source | Cold light source (optional) / Fluorescent ring illuminator (optional) / LED ring light illuminator (optional) | Transmitted illumination : Halogen 12V/10W Incident illumination : Halogen 12V/10W Or both 3W LED incident and transmitted light | |

Stereo



Stereo Microscope

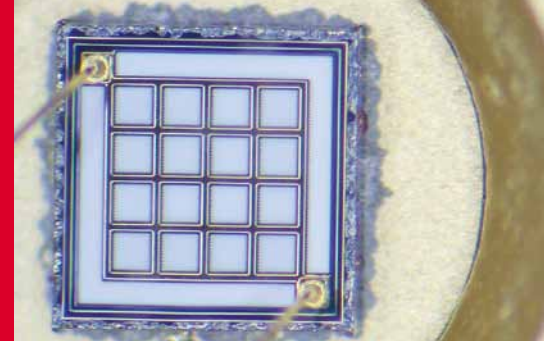
SMZ-161



Greenough stereoscopic optical system, offers the best performance of a zoom ratio of 1:6, with high resolution and a long working distance.

| | SMZ-161B | SMZ-161T |
|--------------------------------|---|--|
| Optical system | Greenough | |
| Observation angle | 45°/ 60° | 45° |
| Magnification range (standard) | 0.75X - 4.5X | |
| Zoom ratio | 1:6 | |
| Eyepiece | WF10X (Ø20) / eyepiece tube adjustable / WF 10X (Ø23) / optional N-WF 15X (Ø16), 20X (Ø13) optional with RoSH lens | |
| Interpupillary adjustment | 50mm-75mm | |
| Height of eye point | 367mm | |
| Working distance (standard) | 110mm | |
| C-Mount adapter | / | 0.5X, 0.65X, 1X adapters available |
| Photo adapter | / | Photo adapter, 2.5X, 4X photo eyepiece available |
| Auxiliary ESD objectives | 0.3X [WD = 301mm], 0.5X [WD = 191.8mm], 0.63X [WD = 142.7mm], 0.75X [WD = 128.6mm], 1.5X [WD = 56.3mm], 2.0X [WD = 38.6mm] | |
| Max. working distance | 301mm | |
| Weight | 3.7kg (Head 1.2kg) | |
| Optional illuminator | Ring LED light / fluorescent ring illuminator / cold light source | |
| Stand option | <ul style="list-style-type: none"> • Reflector design provides a more homogeneous illumination at a lower temperature • Compact R2LED stand with 3W LED • Compact R2GG stand with 12V/10W halogen incident and 12V/20W halogen transmitted light • Improved design for various boom stands for industrial use | |

Stereo Microscope



Industrial boom stands



Articulating arm boom stand
 (with square base and focusing connector)
 Vertical pole mounting diameter: Ø32mm
 Focusing pole mounting diameter: Ø25mm / Ø32mm
 Length of vertical pole: 400mm, 600mm (optional)



Special universal stand
 (with round base and focusing connector)
 Diameter of base: Ø300mm
 Length of vertical pole: 400mm, 600mm (optional)
 Horizontal movement: 260mm
 Vertical pole mounting diameter: Ø32mm
 Focusing pole mounting diameter: Ø25mm / Ø32mm



Ball bearing boom stand
 (with square base and focusing connector)
 Vertical pole mounting diameter: Ø32mm
 Focusing pole mounting diameter: Ø25mm / Ø32mm
 Length of vertical pole: 400mm, 600mm (optional)



Special universal stand
 (with square base and focusing connector)
 Length of base: 300mm
 Width of base: 300mm
 Horizontal movement: 400mm
 Length of vertical pole: 400mm, 600mm (optional)
 Vertical pole mounting diameter: Ø32mm
 Focusing pole mounting diameter: Ø25mm / Ø32mm



Articulating arm boom stand
 (with table clamp type and focusing connector)
 Vertical pole mounting diameter: Ø32mm
 Focusing pole mounting diameter: Ø25mm / Ø32mm
 Maximum thickness of clamping the table: 75mm
 Length of vertical pole: 400mm, 600mm (optional)



Industrial arm boom stand
 (with square base)
 Length of base: 300mm
 Width of base: 300mm
 Horizontal movement: 400mm
 Length of vertical pole: 400mm, 600mm (optional)
 Vertical pole mounting diameter: Ø32mm
 Focusing pole mounting diameter: Ø25mm / Ø32mm
 Connects with the industrial arm directly without focusing connector

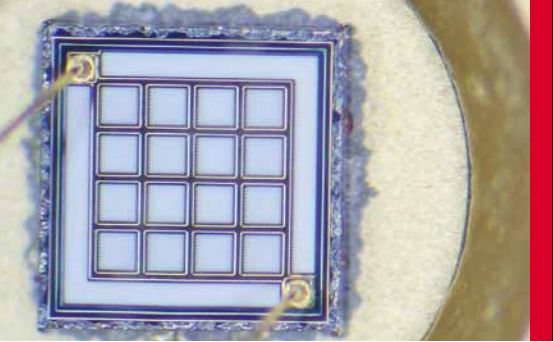


Ball bearing boom stand
 (with table clamp type and focusing connector)
 Vertical pole mounting diameter: Ø32mm
 Focusing pole mounting diameter: Ø25mm / Ø32mm
 Maximum thickness of clamping the table: 75mm
 Length of vertical pole: 400mm, 600mm (optional)



Manual movement stand
 Area of surface: 450mm x 350mm
 X movement: 410mm
 Y movement: 220mm
 Supporting holder can swing around forward and backward to satisfy the requirements to observe objects from different sides.

Stereo



Stereo Microscope

Illumination Accessories



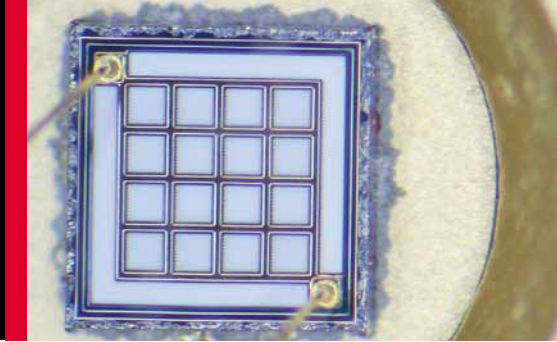
Motic VI-LED / VI-HAL Vertical Illuminator utilizes a groundbreaking optical and illumination system to enable on-axis observation and documentation, specially designed for Motic SMZ-161 and SMZ-171.

True on-axis observation of high-resolution, high-contrast, Shadow-free images capture are possible due to the VI-LED / VI-HAL Vertical Illuminator's elimination of the traditional stereoscope's angular view of the specimen. This is ideal for the observation of particularly smooth, specular surfaces and highly reflective specimens such as integrated circuits, semiconductor wafers, polished metal parts, solder balls, or magnetic recording heads.

The VI-LED / VI-HAL vertical Illuminator will be your perfect stereo microscope illumination solution.

| | VI-LED | VI-HAL |
|-----------------------------|--|----------------------|
| Mounting on microscope body | Screw onto the head directly by 3 Knurled screws | |
| Input Voltage | 12V, 2A | 12V, 4A |
| Lamp output power | LED 3W*2 | Halogen bulb, 6V/30W |
| Color Temperature | 3,000~3,500 K, 6,000~7,000 K available | 3,000~3,200 K |
| Lamp Life | 20,000 hours | 100 hours |
| switching power supply | AV100-240V, 50/60HZ | AV100-240V, 47-63Hz |

Stereo Microscope



Illumination Accessories

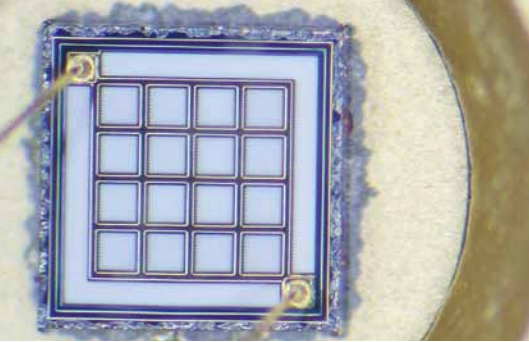


2401K: Economic, sturdy, shadow-free, pure-white fluorescent ring illumination for stereo microscopes
 MLC-150: An industrial designed illumination

| 2401K | | LED ring light |
|-----------------------------|--|---|
| Mounting on microscope body | Clamp with mounting ring [special screw on adapter for SMZ168]; mounting ring causes a decrease in working distance of approximately 10mm, SMZ168 adapter decreases working distance by 5 mm | For SMZ-161/171/ K series. Screw onto the head directly by 3 special screws |
| Input Voltage | 115V, 220V | 100 – 240V |
| Input frequency | 50/60HZ | 50/60HZ |
| Lamp output power | 12W | 4.5W, DC,24V(MAX) |
| Color Temperature | 6400K | 9,000~10,000 K |
| Lux | 510Lm | 35,000Lux |
| Lamp Life | 500hours | Above 10,000 hours |
| Weight | 252g | 250g |

| MLC150 | | | | | | |
|---------------------|-----------------------|--|------------------|------------|-------------------|-------------------|
| Light Guide | Type | Flexible | Flexible | Ring Light | Bifurcated | 1-arm |
| Fiber | Length | 1500mm | 2000mm | 1000mm | 500mm | 500mm |
| | Type | | | Glass | | |
| | Fiber Bundle Diameter | Ø7mm | Ø5mm | Ø5mm | Ø8mm | Ø5.6mm |
| Proximal Diameter | | Ø15mm | | | | |
| Distal End Diameter | | Ø15mm | Ø7mm | Ø61mm | Ø13mm | Ø9mm |
| Distal End Type | | Std. straight tip | Right angle line | Ring | Std. straight tip | Std. straight tip |
| Colour Temperature | | 500K - 3700K, Using blue filter can increase colour temperature above 5600K. | | | | |
| Lamp Output Power | | 150W | | | | |
| Bending Radius | | Ø18mm | Ø18mm | Ø225mm | Ø200mm | Ø200mm |
| Emitter Dimensions | | 220(H) x 193(W) x 112(D)mm | | | | |

Stereo



Stereo Microscope

SFC-11 / SFC-12



Compact, effective lightweight stereo microscopes with high-quality optical performance.

| | SFC-11 A | SFC-11 B | SFC-11 C | SFC-12 A | SFC-12 B | SFC-12 C |
|---------------------------|---|----------|----------|---------------------------------------|----------|----------|
| Optical System | Greenough | | | | | |
| Convergent Angle | 12° | | | | | |
| Magnification | 1X, 2X | 1X, 3X | 2X, 4X | 1X, 2X | 1X, 3X | 2X, 4X |
| Eyepieces | Widefield 10x, Field Number [F.N.] = 20mm | | | | | |
| Working Distance | 95mm | | | | | |
| Observation angle | 45° | | | | | |
| Interpupillary adjustment | 54mm-76mm | | | | | |
| Diopter adjustment | Provided on left tube only. Adjustment range : ±5 diopter | | | | | |
| C-mount | / | | | CCD adapter mountable [0.4x included] | | |
| Optional illuminator | Fluorescent ring light illuminator / Cold light source | | | | | |
| Stand option | > Compact N2GG stand with 12V/15W halogen incident light and 12V/10W halogen transmitted light > Universal power input 110V-220V | | | | | |