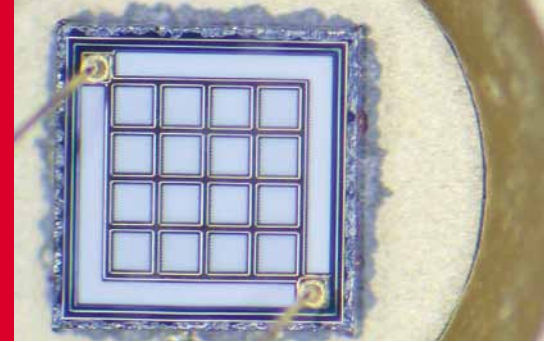


# Stereo Microscope



## K-Series



K-400L



K-500L



K-700P

Infinity optics, versatile, common main objective [CMO], this series is ideal for most inspection applications.

		K400L	K500L	K700P
Body	Optical System	Infinity, common main objective [CMO]		
	Convergent Angle	14°		
	Magnification	4 Step Changer [6,12,25,50 ratio]	[6.4, 10, 16, 25, 40 ratio] 5 Step Changer	Zoom range: 5.2:1
	Working Distance	89mm		
	Observation tube inclination	45°		
	Interpupillary distance adjustment	54mm - 76mm		
	Diopter adjustment	±5 diopter		
	Auxiliary objectives	0.3X, 0.5X, 0.625X, 1.5X, 2X		
	Eyepiece	Super Widefield 10X/ 23		
Stand		Illumination stand		Plain stand
	Focusing adjustment	50mm		
	Stage Plate	Black & white plate, Frosted glass plate		Black & white plate
	Light Source	Incident light: 12V/10W Halogen Transmitted light: 12V/10W Halogen		Cold light illumination (optional) Fluorescent ring Illuminator(optional) LED ring Illuminator(optional)

# Stereo Microscope

## SMZ-171



SMZ-171BLED  
(Pole Type)



SMZ-171TLED  
(Fixed Arm)



SMZ-171TP  
(Fixed Arm)

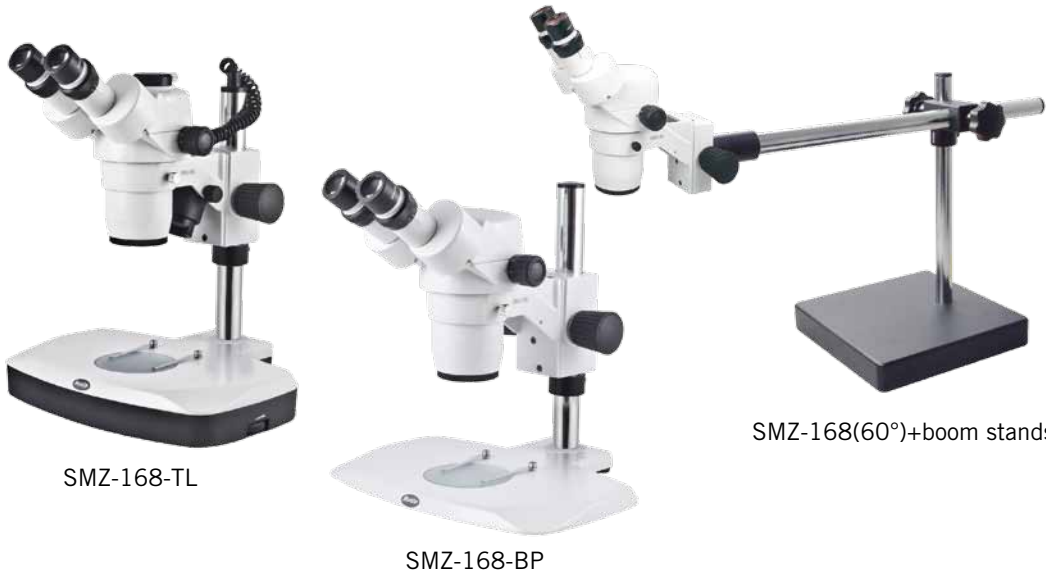
Greenough stereoscopic optical system and multi-coated lens with relax view observation. Optional ESD feature for head and stand is available. Designed for a wide range of biological and material science applications, especially for industrial quality control.

	SMZ-171BL	SMZ-171TL
Optical system	Greenough	
Observation angle	45°/ 60°	45°
Magnification range (standard)	0.75X--5X	
Zoom ratio	1:6.7	
Eyepiece	N-WF, high eye-point 10X (Ø23), Diopter adjustable	
	N-WF 12.5X (Ø18), 15X (Ø16), 20X (Ø13) optional	
Interpupillary adjustment	48mm-75mm	
Height of eye point	405mm	
Working distance (standard)	110mm	
Weight	6.2 kg (head 1.4kg)	
C-Mount adapter	/	Trinocular head only
	/	0.5X, 0.65X, 1X adapters available
Photo adapter	/	Photo adapter, 2.5X, 4X photo eyepiece available
Auxiliary ESD objectives	0.3X [WD = 301mm], 0.5X [WD = 191.8mm], 0.63X [WD = 142.7mm], 0.75X [WD = 128.6mm], 1.5X [WD = 56.3mm ], 2.0X [WD = 38.6mm]	
Max. working distance	301mm	
Stand option	Stable pole stand and arm base stand available 3W LED incident and transmitted light with reflector design Improved design for various boom stands for industrial use ESD stand optional	

# Stereo Microscope



## SMZ-168



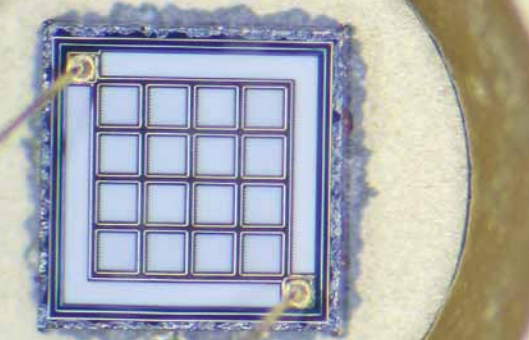
SMZ-168-TL

SMZ-168-BP

SMZ-168(60°)+boom stands

Zoom ratio of 6.7:1 and excellent optical performance combined with outstanding price-performance ratio. Designed to satisfy the most demanding user applications.

	SMZ-168 B	SMZ-168 (60°) + boom stands	SMZ-168 T	
<b>Body</b>	Optical system	Greenough		
	Tube inclination angle	35°	60°	35°
	Magnification range	0.75X – 5X		
	Zoom ratio	1:6.7		
	Eyepiece	High eyepoint, widefield WF10X/23 Widefield WF5X/23, WF6.25X/23, WF15X/17, WF20X/13, WF30X/8, WF32X/8 optional		
	Interpupillary distance adjustment	±5 diopter, 52mm - 75mm		
	Working distance	113mm		
	C-mount adapter	/	/	0.3X, 0.65X available
	Photo adapter	/	/	Photo adapter, 2X photo eyepiece available
Auxiliary objectives	0.3X [WD =324mm], 0.5X [WD =192mm], 0.63X [WD =156mm] 0.75X [WD =127mm], 1.5X [WD =50mm ], 2X [WD = 34.5mm]			
<b>Stand</b>		Plain stand – 168P	Illumination stand – 168L	
	Focusing adjustment	50mm		
	Stage Plate	Black & white plate	Black & white plate, Frosted glass plate	
	Light Source	Cold light source (optional) / Fluorescent ring illuminator (optional) / LED ring light illuminator (optional)	Transmitted illumination : Halogen 12V/10W Incident illumination : Halogen 12V/10W Or both 3W LED incident and transmitted light	



# Stereo Microscope

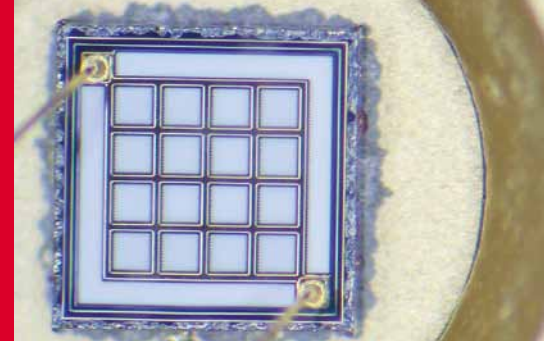
## SMZ-161



Greenough stereoscopic optical system, offers the best performance of a zoom ratio of 1:6, with high resolution and a long working distance.

	SMZ-161B	SMZ-161T
Optical system	Greenough	
Observation angle	45°/ 60°	45°
Magnification range (standard)	0.75X - 4.5X	
Zoom ratio	1:6	
Eyepiece	WF10X (Ø20) / eyepiece tube adjustable / WF 10X (Ø23) / optional N-WF 15X (Ø16), 20X (Ø13) optional with RoSH lens	
Interpupillary adjustment	50mm-75mm	
Height of eye point	367mm	
Working distance (standard)	110mm	
C-Mount adapter	/	0.5X, 0.65X, 1X adapters available
Photo adapter	/	Photo adapter, 2.5X, 4X photo eyepiece available
Auxiliary ESD objectives	0.3X [WD = 301mm], 0.5X [WD = 191.8mm], 0.63X [WD = 142.7mm], 0.75X [WD = 128.6mm], 1.5X [WD = 56.3mm ], 2.0X [WD = 38.6mm]	
Max. working distance	301mm	
Weight	3.7kg (Head 1.2kg)	
Optional illuminator	Ring LED light / fluorescent ring illuminator / cold light source	
Stand option	<ul style="list-style-type: none"> <li>• Reflector design provides a more homogeneous illumination at a lower temperature</li> <li>• Compact R2LED stand with 3W LED</li> <li>• Compact R2GG stand with 12V/10W halogen incident and 12V/20W halogen transmitted light</li> <li>• Improved design for various boom stands for industrial use</li> </ul>	

# Stereo Microscope



## Industrial boom stands



**Articulating arm boom stand**  
 ( with square base and focusing connector)  
 Vertical pole mounting diameter: Ø32mm  
 Focusing pole mounting diameter: Ø25mm / Ø32mm  
 Length of vertical pole: 400mm, 600mm (optional)



**Special universal stand**  
 (with round base and focusing connector)  
 Diameter of base: Ø300mm  
 Length of vertical pole: 400mm, 600mm (optional)  
 Horizontal movement: 260mm  
 Vertical pole mounting diameter: Ø32mm  
 Focusing pole mounting diameter: Ø25mm / Ø32mm



**Ball bearing boom stand**  
 ( with square base and focusing connector)  
 Vertical pole mounting diameter: Ø32mm  
 Focusing pole mounting diameter: Ø25mm / Ø32mm  
 Length of vertical pole: 400mm, 600mm (optional)



**Special universal stand**  
 (with square base and focusing connector)  
 Length of base: 300mm  
 Width of base: 300mm  
 Horizontal movement: 400mm  
 Length of vertical pole: 400mm, 600mm (optional)  
 Vertical pole mounting diameter: Ø32mm  
 Focusing pole mounting diameter: Ø25mm / Ø32mm



**Articulating arm boom stand**  
 (with table clamp type and focusing connector)  
 Vertical pole mounting diameter: Ø32mm  
 Focusing pole mounting diameter: Ø25mm / Ø32mm  
 Maximum thickness of clamping the table: 75mm  
 Length of vertical pole: 400mm, 600mm (optional)



**Industrial arm boom stand**  
 (with square base)  
 Length of base: 300mm  
 Width of base: 300mm  
 Horizontal movement: 400mm  
 Length of vertical pole: 400mm, 600mm (optional)  
 Vertical pole mounting diameter: Ø32mm  
 Focusing pole mounting diameter: Ø25mm / Ø32mm  
 Connects with the industrial arm directly without focusing connector

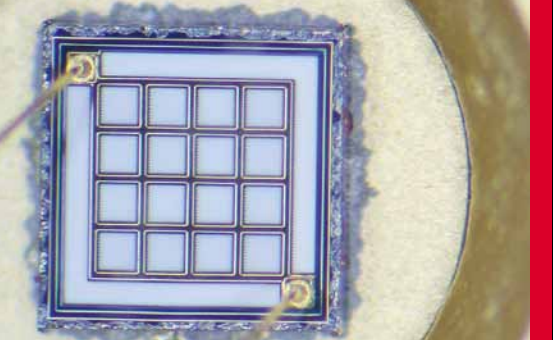


**Ball bearing boom stand**  
 (with table clamp type and focusing connector)  
 Vertical pole mounting diameter: Ø32mm  
 Focusing pole mounting diameter: Ø25mm / Ø32mm  
 Maximum thickness of clamping the table: 75mm  
 Length of vertical pole: 400mm, 600mm (optional)



**Manual movement stand**  
 Area of surface: 450mm x 350mm  
 X movement: 410mm  
 Y movement: 220mm  
 Supporting holder can swing around forward and backward to satisfy the requirements to observe objects from different sides.

Stereo



# Stereo Microscope

## Illumination Accessories



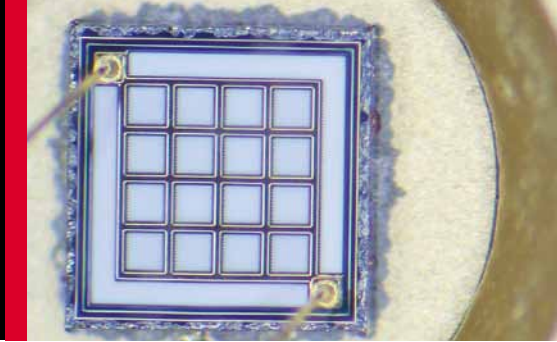
Motic VI-LED / VI-HAL Vertical Illuminator utilizes a groundbreaking optical and illumination system to enable on-axis observation and documentation, specially designed for Motic SMZ-161 and SMZ-171.

True on-axis observation of high-resolution, high-contrast, Shadow-free images capture are possible due to the VI-LED / VI-HAL Vertical Illuminator's elimination of the traditional stereoscope's angular view of the specimen. This is ideal for the observation of particularly smooth, specular surfaces and highly reflective specimens such as integrated circuits, semiconductor wafers, polished metal parts, solder balls, or magnetic recording heads.

The VI-LED / VI-HAL vertical Illuminator will be your perfect stereo microscope illumination solution.

	VI-LED	VI-HAL
Mounting on microscope body	Screw onto the head directly by 3 Knurled screws	
Input Voltage	12V, 2A	12V, 4A
Lamp output power	LED 3W*2	Halogen bulb, 6V/30W
Color Temperature	3,000~3,500 K, 6,000~7,000 K available	3,000~3,200 K
Lamp Life	20,000 hours	100 hours
switching power supply	AV100-240V, 50/60HZ	AV100-240V, 47-63Hz

# Stereo Microscope



## Illumination Accessories

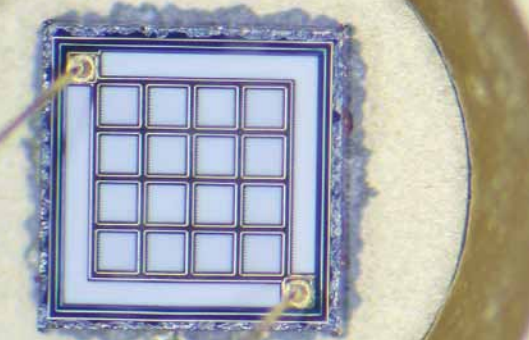


2401K: Economic, sturdy, shadow-free, pure-white fluorescent ring illumination for stereo microscopes  
 MLC-150: An industrial designed illumination

2401K		LED ring light
Mounting on microscope body	Clamp with mounting ring [special screw on adapter for SMZ168]; mounting ring causes a decrease in working distance of approximately 10mm, SMZ168 adapter decreases working distance by 5 mm	For SMZ-161/171/ K series. Screw onto the head directly by 3 special screws
Input Voltage	115V, 220V	100 – 240V
Input frequency	50/60HZ	50/60HZ
Lamp output power	12W	4.5W, DC,24V(MAX)
Color Temperature	6400K	9,000~10,000 K
Lux	510Lm	35,000Lux
Lamp Life	500hours	Above 10,000 hours
Weight	252g	250g

MLC150						
Light Guide	Type	Flexible	Flexible	Ring Light	Bifurcated	1-arm
Fiber	Length	1500mm	2000mm	1000mm	500mm	500mm
	Type			Glass		
	Fiber Bundle Diameter	Ø7mm	Ø5mm	Ø5mm	Ø8mm	Ø5.6mm
Proximal Diameter		Ø15mm				
Distal End Diameter		Ø15mm	Ø7mm	Ø61mm	Ø13mm	Ø9mm
Distal End Type		Std. straight tip	Right angle line	Ring	Std. straight tip	Std. straight tip
Colour Temperature		500K - 3700K, Using blue filter can increase colour temperature above 5600K.				
Lamp Output Power		150W				
Bending Radius		Ø18mm	Ø18mm	Ø225mm	Ø200mm	Ø200mm
Emitter Dimensions		220(H) x 193(W) x 112(D)mm				

Stereo



# Stereo Microscope

## SFC-11 / SFC-12



Compact, effective lightweight stereo microscopes with high-quality optical performance.

	SFC-11 A	SFC-11 B	SFC-11 C	SFC-12 A	SFC-12 B	SFC-12 C
Optical System	Greenough					
Convergent Angle	12°					
Magnification	1X, 2X	1X, 3X	2X, 4X	1X, 2X	1X, 3X	2X, 4X
Eyepieces	Widefield 10x, Field Number [F.N.] = 20mm					
Working Distance	95mm					
Observation angle	45°					
Interpupillary adjustment	54mm-76mm					
Diopter adjustment	Provided on left tube only. Adjustment range : ±5 diopter					
C-mount	/			CCD adapter mountable [0.4x included]		
Optional illuminator	Fluorescent ring light illuminator / Cold light source					
Stand option	> Compact N2GG stand with 12V/15W halogen incident light and 12V/10W halogen transmitted light > Universal power input 110V-220V					