

**COANTEC**



## Coantec M3 Series HD Industrial Videoscopes

To build a first-class national brand of industrial videoscopes!  
[www.ChinaVideoscope.com](http://www.ChinaVideoscope.com)

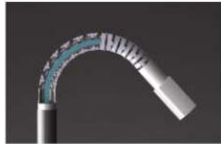


reddot design award

*Globally unique replaceable insert tube!*

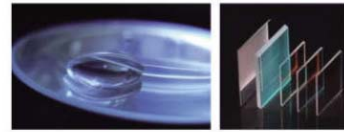
Excellent Quality /  
/ Easy Operation  
Light and Handy /  
/ Super Features

✓ **Excellent quality**



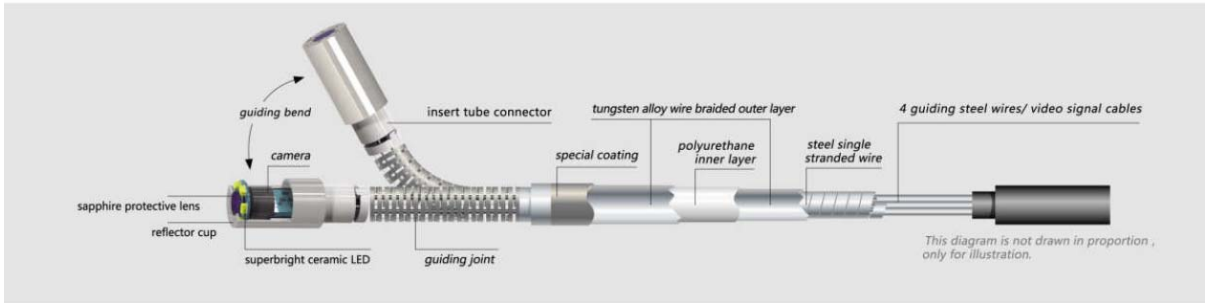
**1, Wear-resistant titanium alloy probe**

Wear resistance: 100 times better than ordinary stainless steel probe

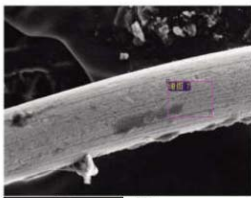


Sapphire protective lens  
Super light penetration 99%

- 2, Sapphire protective lens**
- Impact-resistant**
- Fall-resistant**
- Scratch-resistant**



**3, Double tungsten alloy braided insert tube of 4 layers**



Tungsten alloy:  
detected with electron microscopy

Wear resistance: 20 times better than steel wire insert tube  
Flexibility: 4 times better than other materials



**4, 3200mAh rechargeable batteries**

Low power consumption design, saving 30% power.  
Working time : 4.5 hours

✓ **Easy operation**

**6, Simple and intuitive menu guidance, easy operation**



Ergonomic design



Support 8 languages :  
Chinese, English, Russian, etc.

**7, Fast and accurate target location**

With a unique design of damping elastic rocker, users can fast and easily control the probe direction. After positioning, users can make sharp turning with rocker for more detailed inspections.



**5, Sturdy and durable**

- Cold-resistant
- High-temperature-resistant
- Water-proof
- Fall-resistant
- One meter fall-resistant test

Waterproof Level :  
Insert tube : IP67/ Monitor: IP55



✓ Light and handy

8, Small instrument case, easy carry

Only 0.55Kg(with battery), one-hand operation  
Sturdy protection design enhances the product protection level.



Optional accessories:  
magnetic base/ shoulder belt of instrument case/ insert tube



user manual / certificate/ warranty card / lithium battery / TF card / card reader / adaptor / USB data cable



9, Detachable magnetic base

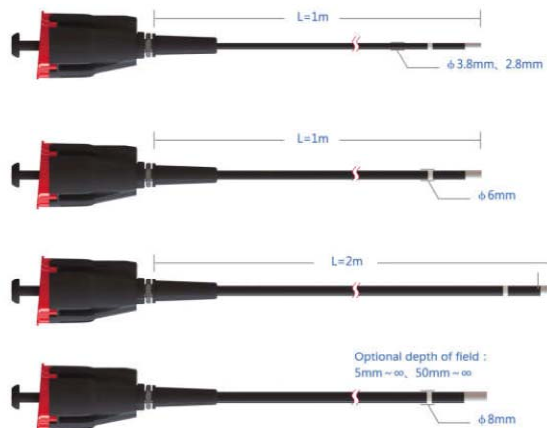
Detachable magnetic base can be adsorbed on the metal surface, making the operation and inspection easier.

✓ Super features



10, Replaceable insert tube

According to different inspection requirements, users can easily replace the spare insert tube with different length, diameter, depth of field and viewing angle, which can greatly reduce the using cost.



### 11, Super large depth of field and wide viewing angle

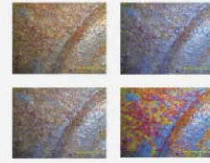
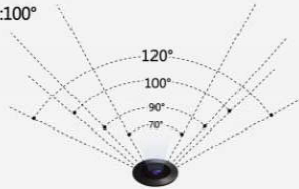
The illumination of M3 series is 10 times of the ordinary borescope. It is up to 20,000lx at a maximum.

Super large depth of field: 10mm-100mm  
Super wide viewing angle: 100°



### 12, Real-time video output

With TV-out port, it can connect with PC and achieve remote video output.



### 13, Excellent Image processing technology

With Wider picture processing technology, it can effectively highlight the details, and make the pictures delicate and realistic.

Static picture : 4 times magnification  
Real-time image : 2 times digital magnification



3.5 inches SONY HD digital screen  
Resolution: 640 x 480  
( ordinary: 320\*240 )  
Double backlight  
TFT array  
Full viewing angle

Camera	
Camera Diameter	φ6mm/ φ2.8mm/ φ3.8mm
Camera Material	Titanium Alloy
Pixel	450,000/ 300,000/ 160,000
Depth of Field	Standard: 10mm ~ 100mm, optional: 5mm ~ ∞/ 50mm ~ ∞
Viewing Angle	Standard: 100°, optional: 70°/ 90°/ 120°
System	
Insert Tube	Double tungsten alloy braided insert tube of 4 layers
Insert Tube Length	Standard: 1.5m, Customize
Bending Control	360° all way mechanical control / two-way articulation
Bending Angle	≥ 160°
Brightness	7 levels, manual adjustment
Illumination	20000lx at a maximum
Display	Highlight 3.5 inches TFT LCD
Display	Viewing Angle 85°
Display Resolution	640*480
Bright/Chroma / Contrast Ratio	0~16 levels
Image Resolution	720*480
Picture Format	JPG
Video Format	AVI
Shooting Mode	Single Shooting, Continuous Shooting, Triple Shooting
Image Freezing	One-key-Freezing
Image Rollers	180°
Playback	Squares quick playback
Image Magnification	4 times
Remote Connection	Connect with PC and achieve remote video output
Auto Off	5min, 10min, 15min optional
Language	8 languages : Chinese, English, Russian, etc.
Memory	Standard TF card: 8G, Maximum: 32G
Date I / O Port	Micro-USB port, Video output port

Host	
Size	240mm×102 mm×126 mm
Weight	≤0.55kg ( With battery )
Packaging Case Size	411 mm×321 mm×165mm
Replaceable Insert Tube	Users can easily replace the spare insert tube
Host Base	Detachable magnetic base (optional)
Waterproof	IP67
Fall resistance	1 meter
Power Supply	
Battery	Rechargeable lithium battery ( detachable )
Capacity	4.2V 3200mAh
Working Time	≥4.5hours
Battery Charging	DC5V, 1A
Operation Environment	
Host System Working Temperature	-10°C ~ 50°C, when 0°C below, the display needs preheating.
Camera Working Temperature	-25°C ~ 85°C, when 0°C below, please reduce oriented operation.
Store Temperature	-20°C ~ 60°C
Relative Humidity	Maximum: 90%, non-condensing
Standard Configuration	
instrument case, P40 borescope, battery, card reader, 8G TF card, adaptor, USB line, users manual, certificate, warranty card.	
Optional:	
detachable magnetic base, battery, insert tube, shoulder belt of instrument case	

### Application Field

M3 series borescopes are widely applied in the field of special equipment inspection, electric power, car manufacturing, automotive aftermarket, petrochemical, machinery, aviation, pipeline or container checking, security checking, etc.



CE RoHS

